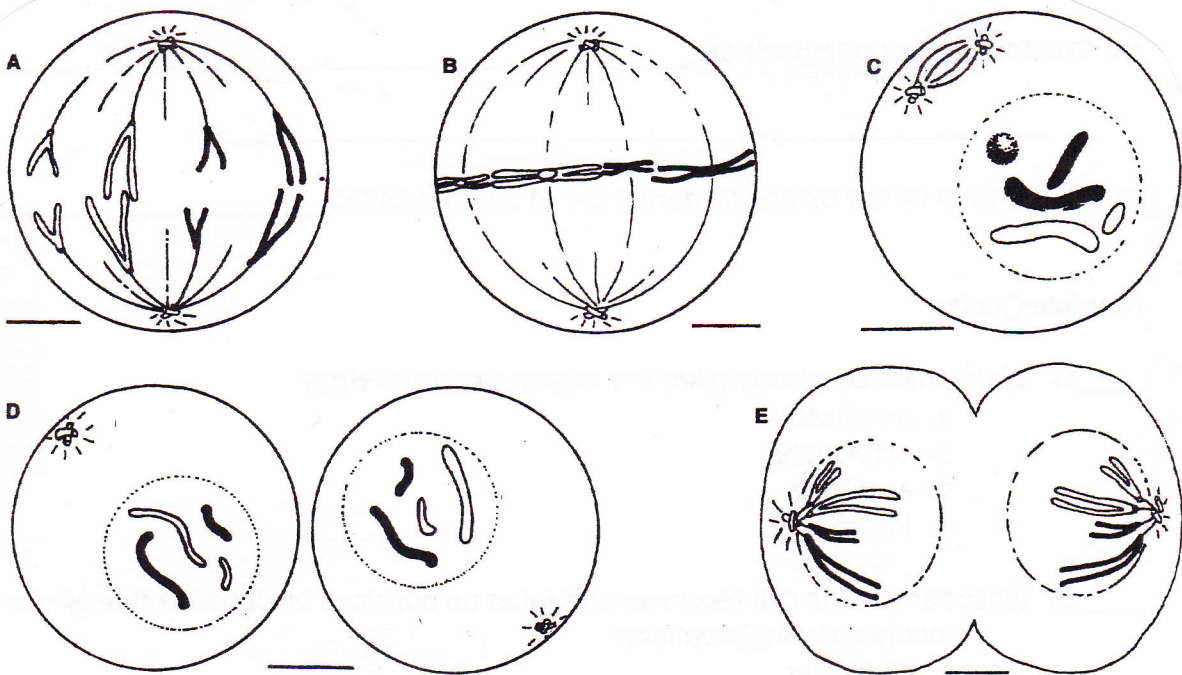


Name \_\_\_\_\_

Hour \_\_\_\_\_

## Mitosis

The following steps of interphase and mitosis are out of order. Place the numbers 1-5 in the blanks to show the correct order. (pgs. 246 - 248)

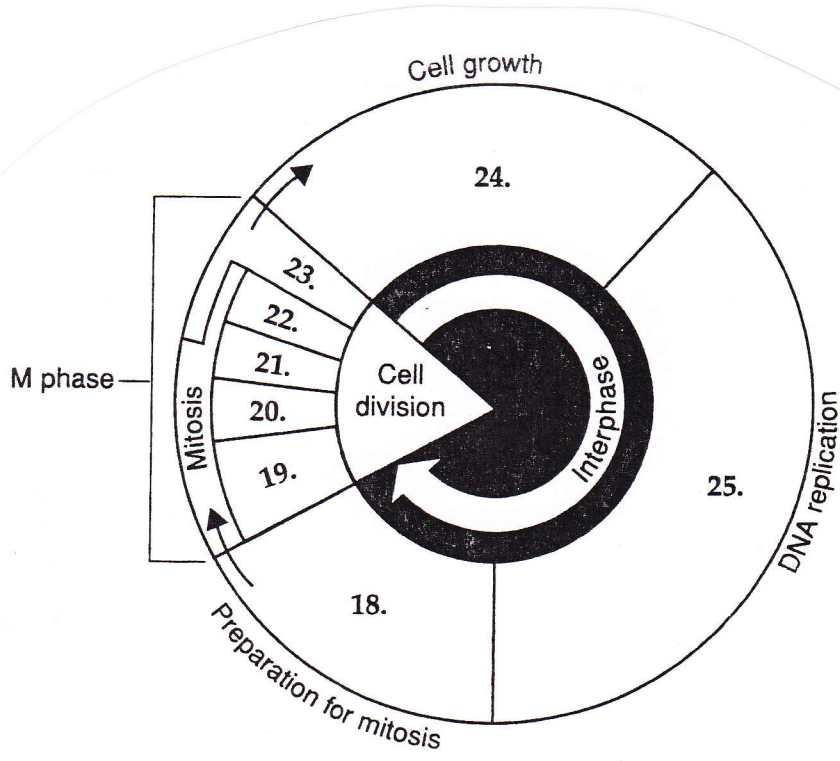


In the blanks below, write the letter of the diagram above that is being described.

1. Two new identical cells are formed. \_\_\_\_\_
2. Cytoplasm begins to separate. \_\_\_\_\_
3. Sister chromatids are first pulled apart. \_\_\_\_\_
4. Chromosomes are completely separated and at opposite ends of the cell. \_\_\_\_\_
5. Sister chromatids can be seen for the first time. \_\_\_\_\_
6. This is what cells look like before going through mitosis. \_\_\_\_\_
7. Nuclear membrane begins to break down. \_\_\_\_\_
8. Sister chromatids move to the cell's center and line up on fibers. \_\_\_\_\_
9. A nuclear membrane begins to form around chromosomes. \_\_\_\_\_



On the lines below, label the events in the cell cycle that correspond with the numbers in the diagram. (pg. 245)



- 18. \_\_\_\_\_
- 19. \_\_\_\_\_
- 20. \_\_\_\_\_
- 21. \_\_\_\_\_
- 22. \_\_\_\_\_
- 23. \_\_\_\_\_
- 24. \_\_\_\_\_
- 25. \_\_\_\_\_