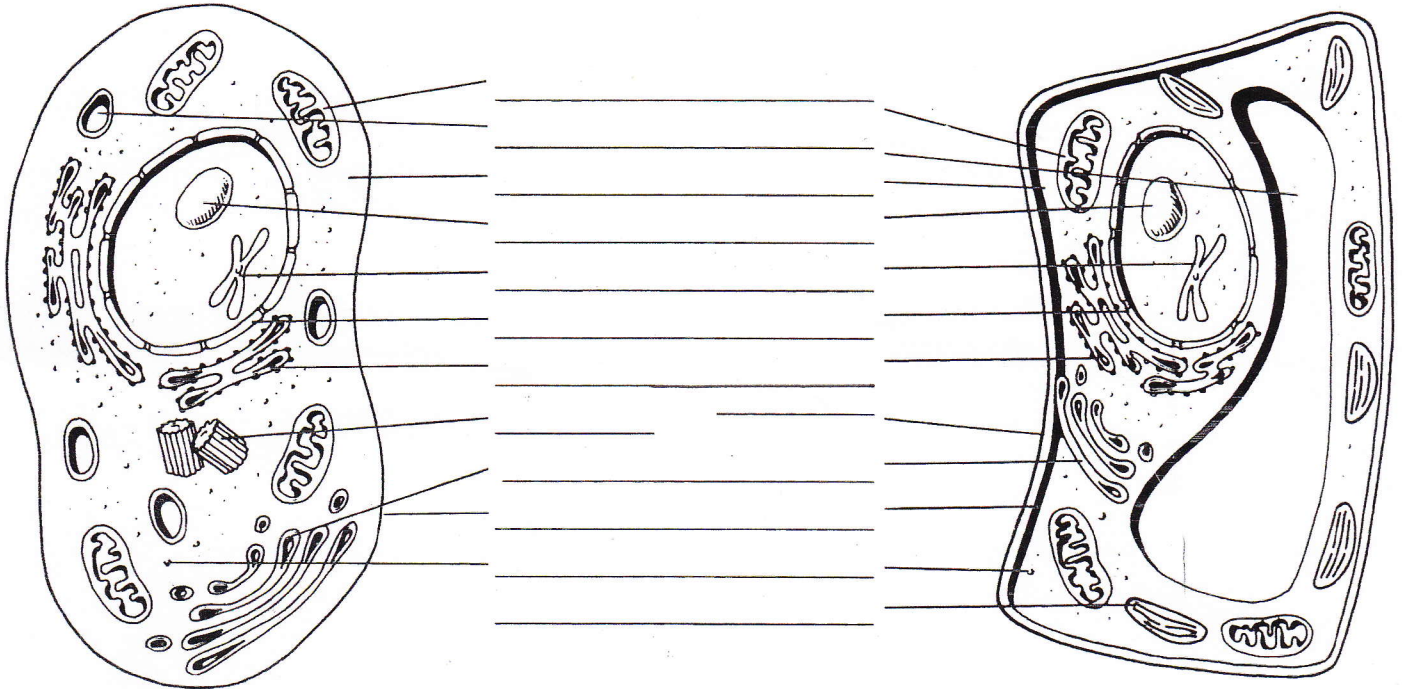


STUDY GUIDE

Name _____ Date _____ Class _____

CELL PARTS AND THEIR JOBS

1. Label the parts of these two cells in the spaces provided.



Cell A

Cell B

2. Read the descriptions of cell parts below and write in the name of the cell part. Use the color indicated to shade the pictures above.
 - a. Use red for the part that gives the cell shape and holds the cytoplasm. _____
 - b. Use green for parts that make food. _____
 - c. Use brown for the thick outer covering that protects and supports the cell. _____
 - d. Use blue for the part that stores substances. _____
 - e. Use black for parts that release energy from food. _____
 - f. Use purple for parts that carry hereditary information. _____
 - g. Use pink for the cell part that helps with cell reproduction. _____
 - h. Use orange for the parts that package and store chemicals. _____
3. List two cell parts found only in a plant cell. _____
4. Where in a cell do most chemical reactions take place? _____

A View of the Cell

Complete the table by writing the name of the cell part beside its structure/function.
A cell part may be used more than once.

Structure / Function	Cell Part
1. A membrane-bound, fluid-filled sac	
2. Closely stacked, flattened membrane sacs	
3. The sites of protein synthesis	
4. A folded membrane that forms a network of interconnected compartments in the cytoplasm	
5. The clear fluid inside the cell	
6. Organelle that manages cell functions in eukaryotic cell	
7. Contains chlorophyll, a green pigment that traps energy from sunlight and gives plants their green color	
8. Digest excess or worn-out cell part, food particles, and invading viruses or bacteria	
9. Small bumps located on the endoplasmic reticulum	
10. Provides temporary storage of food, enzymes, and waste products	
11. Firm, protective structure that gives the cell its shape in plants, fungi, most bacteria, and some protists	
12. Produce a usable form of energy for the cell	
13. Modifies proteins chemically, then repackages them	
14. Contains inner membranes arranged in stacks of membranous sacs called grana	
15. Plant organelles that store starches or lipids or that contain pigments	