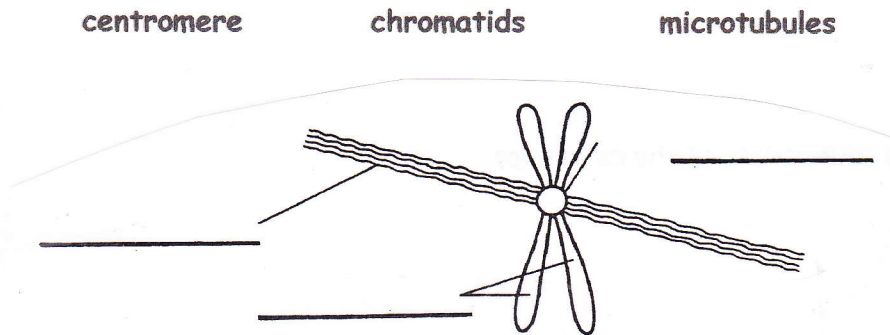


Name _____

Hour _____

Cell Cycle (Pgs 244-245)

Label the diagram below of a chromosome. Use these choices:



Completion (pg. 245)

1. The M phase is also known as _____.
2. Each pair of chromatids is attached at an area called the _____.
3. The three phases of _____ are G_1 , S, and G_2 .
4. The _____ is the series of events that cells go through as they grow and divide.

Multiple Choice

- _____ 5. What process ensures that each daughter cell gets one complete set of genetic information and that each daughter cell also has increased surface area? (pg. 244)
 - a. cell division
 - b. mitosis
 - c. cytokinesis
 - d. cancer
- _____ 6. Before cell division, each chromosome consists of two identical "sister" (pg. 244)
 - a. centromeres.
 - b. cell cycles.
 - c. chromatids.
 - d. spindles.

- _____7. The four phases of the cell cycle are (pg. 245)
- a. interphase, mitosis, G_1 , and G_2
 - b. M phase, G_1 phase, S phase, and G_2 phase
 - c. prophase, metaphase, anaphase, and telophase
 - d. cytokinesis, mitosis, interphase, and metaphase
- _____8. If a cell has 12 chromosomes, how many chromosomes will each of its daughter cells have after mitosis? (pg. 244)
- a. 4
 - b. 6
 - c. 12
 - d. 24

Short Answer

9. What are the four phases of the cell cycle? (pg. 245)
10. What happens when the cell copies its chromosomes?
11. Describe what happens during interphase. (pg. 245)